

**FODS
REUSABLE
CONSTRUCTION
ENTRANCE for
COMMERCIAL &
RESIDENTIAL
BUILDERS**



FODS | COMMERCIAL & RESIDENTIAL

Commercial and residential builders are facing ever changing regulations and requirements, managing effective track out solutions often is an afterthought that results in council fines and community complaints.

Advantages:

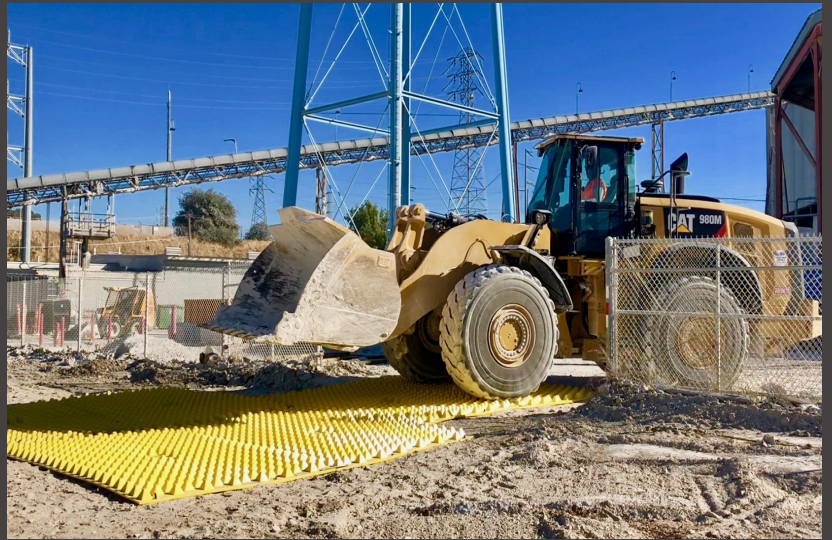
- Reusable mats ensure cost effective investment
- The lightweight nature and ease of transport, allows excavation crews to quickly and easily install and relocate the construction entrance during the phasing of the land development process
- Help prevent tracking out of mud on public streets, reducing fugitive dust and clogged storm sewers
- Proven track record of reducing or eliminating tracking issues during the land development process
- Provide stable exit/entrance for construction traffic and individual building sites
- FODS ensures you stick to the budget and project timeline



FODS ENVIRONMENTAL FOOTPRINT

There are many key ways that FODS innovation will improve your environmental footprint on-site, raising your overall environmental compliance. With stricter regulation regarding the control of sediment and other contaminants on-site the FODS Rumble mats improve your environmental rating by:

- Cutting down or eliminating the need for trucked infill material (less crushed rock resulting in fewer truck movements overall)
- No digging required, with only minimal ground prep and remediation needed
- 100% recyclable at end of the life cycle
- The product is reusable with 10 year+ lifespan
- FODS have proven to be more effective than rumble grids at capturing track out on site



FODS ENVIRONMENTAL FOOTPRINT

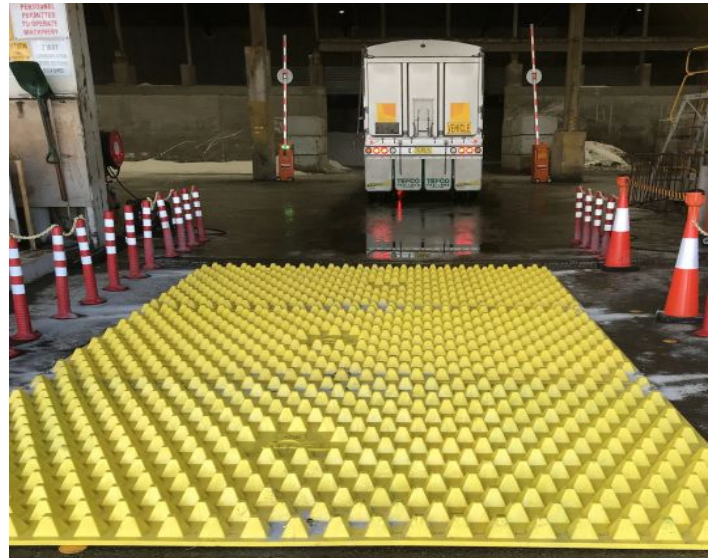
There are many key ways that FODS innovation will improve your environmental footprint on-site raising your overall environmental compliance. With stricter regulation regarding the control of sediment and other contaminants on-site the FODS Rumble mats improve your environmental rating by:

- Cut down or eliminate the need for trucked infill material (less crushed rock resulting in fewer truck movements overall)
- No digging required, with only minimal ground prep and remediation needed
- 100% recyclable at end of the life cycle
- The product is reusable with 10 year+ lifespan
- FODS have proven to be more effective than rumble grids at capturing track out on site



FODS WHAT ARE THE BENEFITS

- Better at removing mud and stones than rumble grids
- Saves you money over time
- Provides High Visibility
- Easy to Clean
- Chemical Resistant
- Environmentally Friendly: Recyclable & Reusable



- Extremely Durable & UV Stable (10 year plus lifespan)
- As little as 30 minutes to install & remove
- Easy and efficient to move from site to site
- No digging required
- No rock top ups required



FODS FEEDBACK



The site crew converted to FODS mats after seeing its results with traction despite being on an incline, even when conditions were wet and muddy.

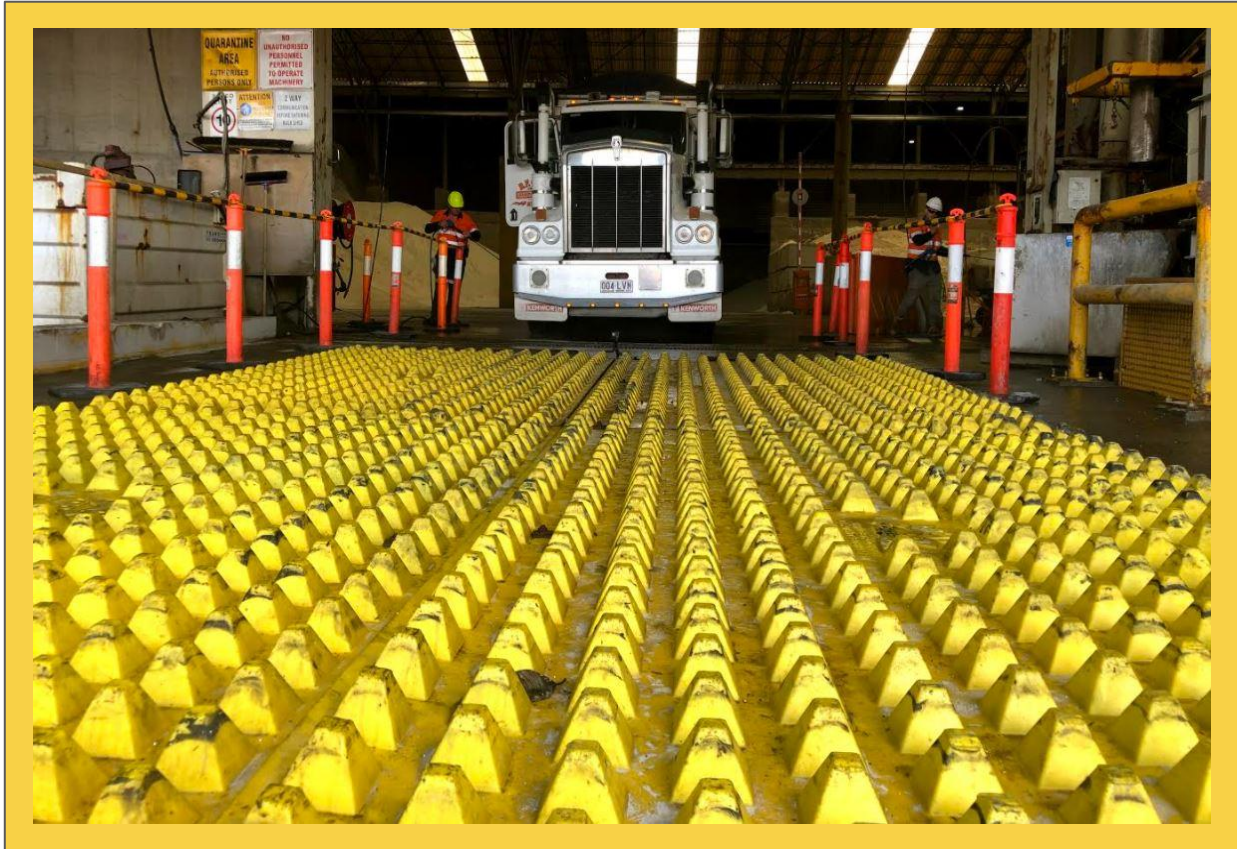
The site crew were surprised to see how much extra mud and dirt was being captured by FODS, even when they were used in conjunction with other track out control methods.



The nature of the mats allowed the team to construct the stretch of mats away from the access road and then drag the FODS into place once it was assembled. This meant the project did not stop the flow of traffic to install.

FODS SPECIFICATIONS

- Length: 3 658mm
- Width: 2 134mm
- Height: 95mm
(Pyramid height 73mm)
- Weight: 195kg
- Load Rating: 80 tonne per pyramid
- Crush Rating: 9 tonne per pyramid
- Material: Compression molded HDPE



	FODS	ROCKS	STEEL GRIDS
Becomes clogged	No	Yes	No
100% solid and uniform construction	Yes	No	Yes
Recyclable	Yes	No	Yes
Easily cleaned	Yes	No	No
Reusable	Yes	No	Yes
Absorbs chemicals and oils	No	Yes	No
Protects ground underneath	Yes	No	No
Highly visible	Yes	No	No
Spans over uneven ground	Yes	Yes	No
Disturbs ground when installed	No	Yes	Yes