



THE MUD STOPS HERE.

REUSABLE CONSTRUCTION ENTRANCE



1800 264 628 | www.fods.com.au



PERFORMANCE & BENEFITS

FODS Rumble Mats outperform traditional rock and geofabric stabilised construction entrances, and can be installed in under 30 minutes and configured to any entrance detail.

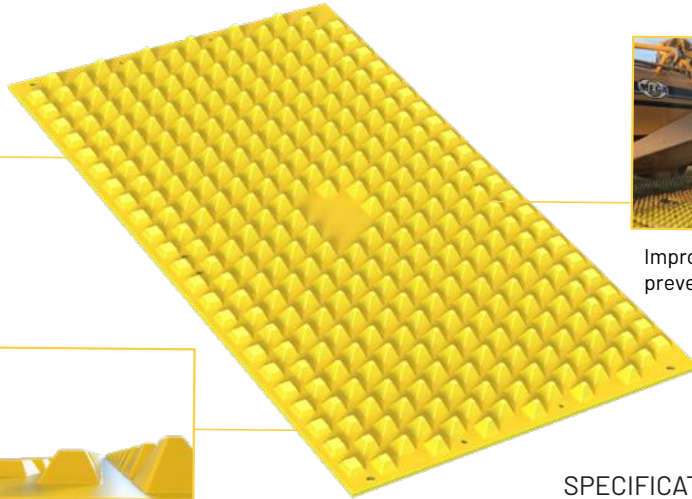
Our FODS Rumble Mats were engineered to deform tires as vehicles pass over, without damage to the tire. Rows of staggered pyramids effectively dislodge sediment, stone and debris. The debris is collected into the base of each mat and will not come in contact with the tires of subsequent vehicles. As a rockless system, it mitigates the hazards of aggregate being lodged in vehicle tires and transported into traffic. FODS improves environmental compliance by reducing construction site track out onto roadways.



Pyramids effectively clean tires through compression and stretching without damage to the tire



Built-in ramp for gradual transition onto and off of mats



Improves compliance, prevents road hazards

SPECIFICATIONS

Mat Size: 3.65m (W) x 2.13m (L) x 9.5cm (H)
 Pyramid Size: 7.3cm (H)
 Mat Weight: 191 kg
 Lifespan: 10+ years



Passenger vehicles easily traverse the FODS System



Mats are simple to stack and transport from worksite to worksite



Each truckload of FODS contains 10-15% of post consumer recycled materials

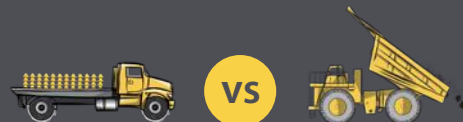
FODS VS TRADITIONAL SITE EXIT

FODS Reusable Construction Entrances:

- ✓ Avoid labor and time intensive processes for each project
- ✓ Mats are engineered for reusability and ease of use
- ✓ Mats handle over 1,000,000 passes of an 36,000+ kg vehicle
- ✓ Mats have a lifespan of 10+ years

Traditional Construction Entrances:

- ✗ Require 80-100 tonnes of rock to build
- ✗ Entrance fills with mud and must be refreshed by hauling in additional stone
- ✗ All contaminated waste must be sent to a landfill afterwards



2

VS

16+

NUMBER OF TRUCKS USED PER ENTRANCE INSTALLATION & REMOVAL

MULTI-TERRAIN:

Grade



Mats can be installed and anchored to any substrate

RIA Construction Site - Melbourne, Victoria

Being a confined space with lots underground services (immediately adjacent operational railway). The FODS were a great product as we didn't have to dig out to install rock/rumble grids. This allowed us to install the FODS at the exits which we previously could not do. The versatility and ease of installation were a big positive.

Adrian White - Environment & Sustainability Manager
Rail Division

40%

Reduction in street sweeper runs vs previous track out method



Listed on the ISC's iSupply directory, and eligible for sustainability credits.

<https://www.iscouncil.org/listing/fods-foreign-object-debris-system-track-out-control-matting/>



INSTALL IN
30
MINUTES



RATED FOR
80+
TONNES



LIFE SPAN
10+
YEARS

INDUSTRIES



Major Infrastructure Projects



Resources & Energy Sectors



Commercial & Residential Developments



Agriculture & Stockpiling

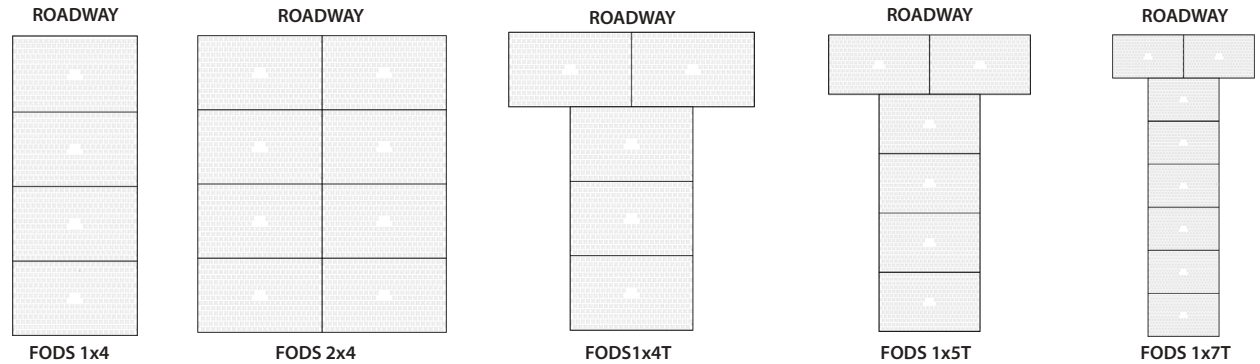


Waste Management & Demolition



Aviation & FOD Prevention

VERSATILE MAT LAYOUTS



CLEANING & MAINTENANCE

To ensure maximum system performance, FODS Rumble Mats should be inspected and maintained as necessary. Mats should be cleaned once voids between the pyramids fill up with 7cm of sediment above the base of the mat. Cleaning methods vary depending on soil type and available equipment.

Cleaning Methods:

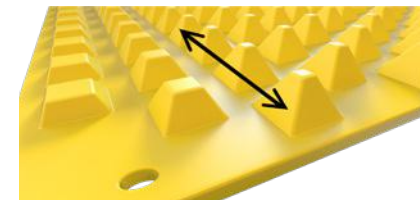
- FODS Shovel
- Skid-Steer Broom Attachment (enclosed broom for dust control)
- Street Sweeper (requires adjustable bristle head)
- Pressure Washer (must have ability to contain water)
- Water Truck (must have ability to contain water)



Buildup Before



After Cleaning



Cleaning Direction



FODS Shovel



READY TO RUMBLE?



JWA Composite Matting Experts

35 Griffin Crescent, Brendale, QLD, 4500

TOLL FREE 1800 264 628

www.fods.com.au | trackoutcontrol@fods.com.au



100%
Recyclable
HDPE